



Stellar OLM to PST Converter 2.0

User Guide

Overview

Stellar OLM to PST Converter converts **Outlook for Mac Data file (OLM 2011)** to **Microsoft Outlook data file (PST)**. The application scans and converts the selected OLM file to a PST file. After scanning, the software shows preview of mails, contacts, tasks, notes and calendars.

What's new in this version?

- Support for MS Outlook 2016

Key features of Stellar OLM to PST Converter:

- Converts **Outlook for Mac Data file (OLM 2011)** to **Microsoft Outlook data file (PST)**.
- Supports Microsoft Outlook 2013, 2010, 2007.
- Option to save converted OLM files in PST, MSG or EML format.
- Find feature to search for OLM files on your computer.
- Provides preview of mails, contacts, tasks, notes and calendars.
- Option to view and save Log Report to analyze the conversion process.

Installation Procedure

Before beginning the installation procedure, make sure that the computer meets the minimum system requirements.

Minimum System Requirement

Operating system: Windows 10 / Windows 8.1 / Windows 8 / Windows 7 / Windows Vista

Microsoft Outlook: 2016 / 2013 / 2010 / 2007

Hard Disk: At least 50 MB of free disk space

RAM: 1 GB minimum (2 GB recommended)

To install the software, follow the steps:

1. Double-click **StellarOLMtoPSTConverter.exe**. **Setup** dialog box is displayed.
2. Click **Next** to continue. **License Agreement** dialog box is displayed.
3. Select **I accept the Agreement** option. Click **Next**.
4. Specify the location where the installation files are to be stored. Click **Next**.
5. Select the folder where the files are to be stored. A default folder is suggested in the box. Click **Browse** to select a different location. Click **Next**.
6. In the **Select Additional Tasks** dialog box, select check boxes as per your choice. Click **Next**.
7. Review your selections. Click **Back** if you want to make any change. Click **Install** to start installation. The Installing window shows the installation process.
8. After completion of the process, **Completing the Stellar OLM to PST Converter Setup Wizard** window opens. Click **Finish**.

Note: Clear **Launch Stellar OLM to PST Converter** check box to prevent the software from launching automatically.

Launching the Software

To launch Stellar OLM to PST Converter in Windows 10:

- Click Start icon -> All apps -> **Stellar OLM to PST Converter** -> **Stellar OLM to PST Converter**
Or,
- Double click **Stellar OLM to PST Converter** icon on the desktop. Or,
- Click **Stellar OLM to PST Converter** tile on the home screen.

To launch Stellar OLM to PST Converter in Windows 8.1 / 8:

- Click **Stellar OLM to PST Converter** tile on the home screen. Or,
- Double click **Stellar OLM to PST Converter** icon on the desktop.

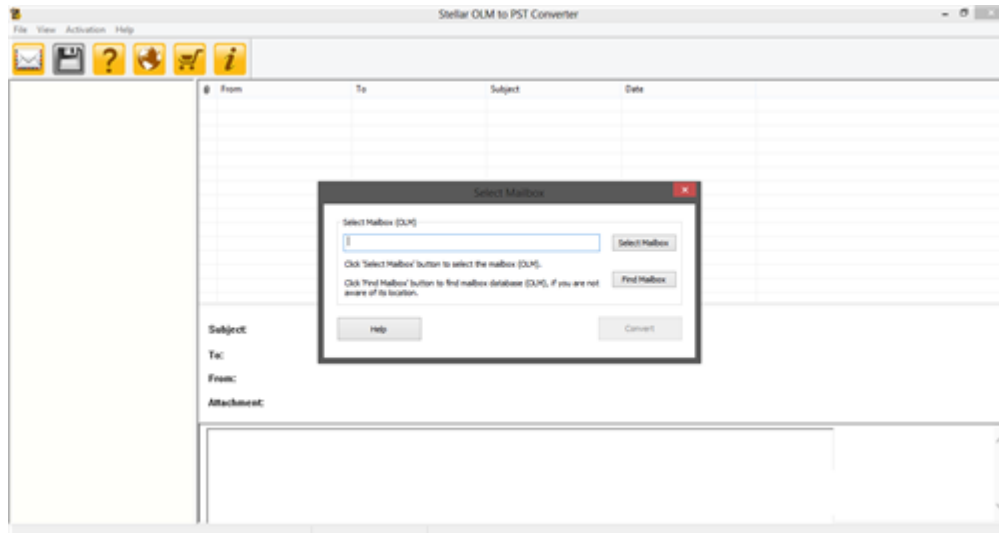
To launch Stellar OLM to PST Converter in Windows 7 / Vista:

- Click Start -> Programs -> **Stellar OLM to PST Converter** -> **Stellar OLM to PST Converter**.
Or,
- Double click **Stellar OLM to PST Converter** icon on the desktop. Or,
- Click **Stellar OLM to PST Converter** icon in Quick Launch.

User Interface

Stellar OLM to PST Converter software has a very easy to use Graphical User Interface. The user interface contains features required for conversion.

After launching the software, you will see the main user interface as shown below:



The user interface contains menus and buttons that let you access various features of the software with ease.

Menus

File

Select OLM Mailbox

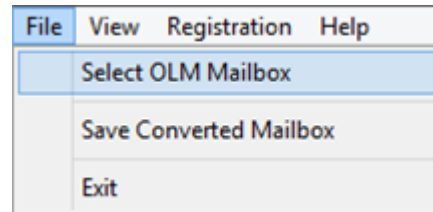
Use this option to open **Select Mailbox** dialog box.

Save Converted Mailbox

Use this option to save converted files.

Exit

Use this option to exit **Stellar OLM to PST Converter**.

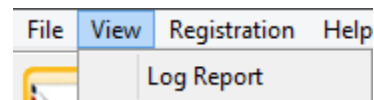


File Menu

View

Log Report

Use this option to view Log Report.



View Menu

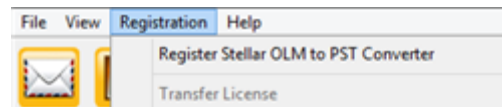
Registration

Register Stellar OLM to PST Converter

Use this option to register the software.

Transfer License

Use this option to transfer the license of the registered software to another computer.



Registration Menu

Help

Stellar OLM to PST Converter Help

Use this option to view the help manual for the software.

Purchase Stellar OLM to PST Converter

Use this option to [buy](#) **Stellar OLM to PST Converter**.

View Support Section

Use this option to visit the [support page](#) of [stellarinfo.com](#)

Visit Knowledgebase

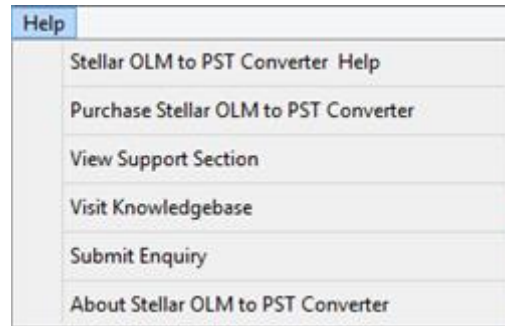
Use this option to visit the [Knowledge Base](#) articles of [stellarinfo.com](#)

Submit Enquiry

Use this option to [submit enquiry](#) to [stellarinfo.com](#)

About Stellar OLM to PST Converter

Use this option to read more information about the software.



Help Menu

Buttons



Select OLM Mailbox

Click this button to open **Select Mailbox** dialog box.



Save Converted Mailbox

Click this button to save the converted files.



Help

Click this button to open the Help Manual for the software.



Update Wizard

Click this button to check for both, latest minor and major version available online.



Purchase

Click this button to [buy](#) **Stellar OLM to PST Converter**.



About

Click this button to read more information about the software.

Ordering the Software

Click <https://www.stellarinfo.com/email-tools/olm-to-pst-converter.php> to know more about **Stellar OLM to PST Converter**.

To purchase the software online, please visit <https://www.stellarinfo.com/email-tools/olm-to-pst-converter/buy-now.php>

Alternatively, click **Purchase Stellar OLM to PST Converter** in **Help Menu** on **Menu Bar** to purchase the software online.

Select either of the methods given above to purchase the software.

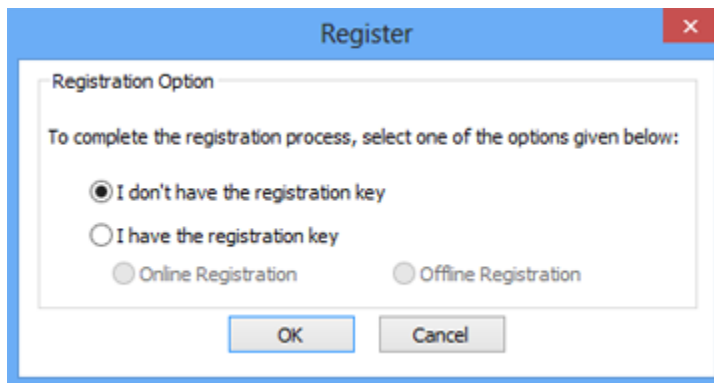
Once the order is confirmed, a serial number will be sent to you through e-mail, which would be required to activate the software.

Registering the Software

The demo version is just for evaluation purpose and must be eventually registered to use the full functionality of the software. The software can be registered using the Registration Key which you will receive via email after purchasing the software.

To register the software:

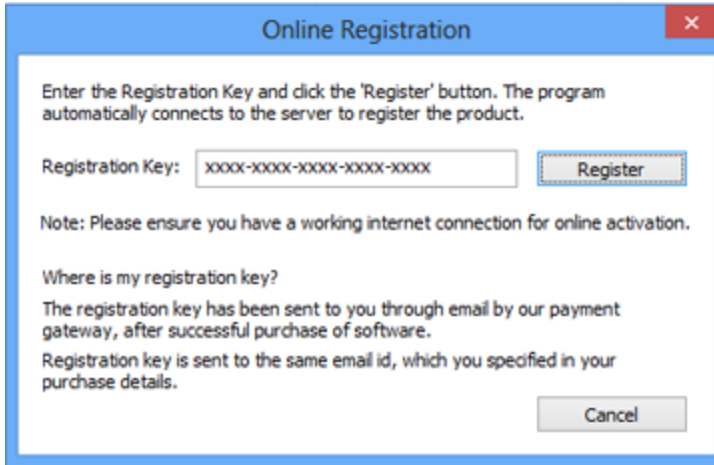
1. Run demo version of **Stellar OLM to PST Converter** software.
2. On **Registration** menu, click **Register** option. *Register* window is displayed as shown below.



3. Choose 'I don't have the registration key' (Use this option if you have not purchased the product) or select 'I have the registration key' (Use this option if you have already purchased the product).

To register the software, when you do not have a registration key, follow the steps given below:

1. In the *Register* window, select '**I don't have the registration key**' option. Click **OK**, to go online and purchase the product.
2. Once the order is confirmed, a Registration Key will be sent to the email provided at the time of purchase.
3. In the *Online Registration* window, type the **Registration Key** and click **Register** button (Please ensure that you have an active Internet connection).



4. ' *Activation Completed Successfully* ' message is displayed after the process is completed successfully. Click **OK**.

To register the software, when you have a key, follow the steps given below:

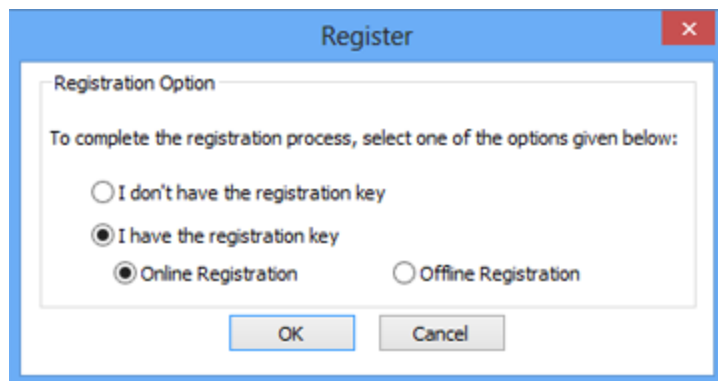
1. In the *Register* window, select '**I have the registration key**' option.
2. You can choose either 'Online Registration' (Use this option to register the software over Internet) or 'Offline Registration' (Use this option to register the software manually / through e-mail if for any reason, Internet connection is unavailable).

- **Online Registration**

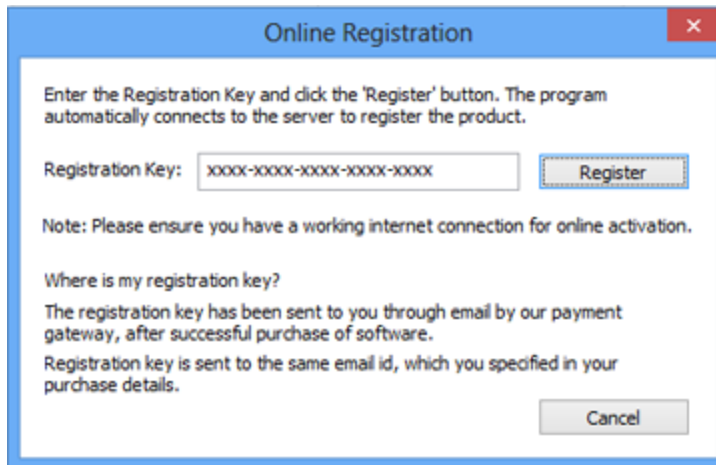
Online Registration is possible only when an active Internet connection is available.

- **To register the software online:**

1. From the *Register* window, select **Online Registration**. Click **OK**.



2. An **Online Registration** dialog box will appear.
3. Type the **Registration Key** (received through email after purchasing the product) in the field of Registration Key. Click **Register**.



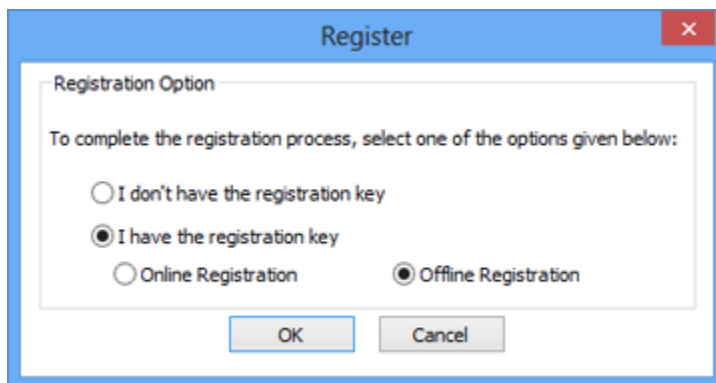
4. The software would automatically communicate with the license server to verify the entered key. If the key you entered is valid, software will be registered successfully.

- **Offline Registration**

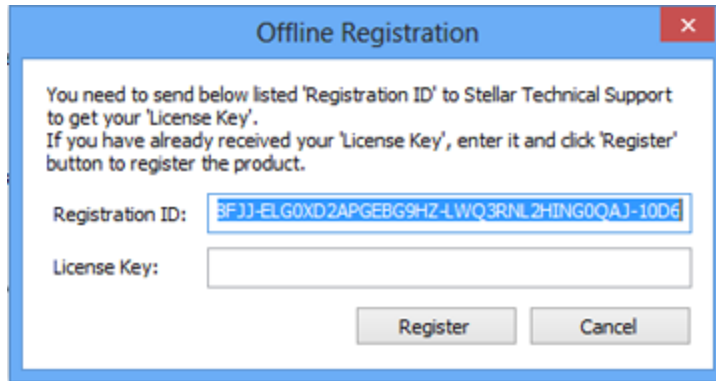
Offline Registration enables you to register the product when your computer does not have an Internet connection.

- **To register the software offline:**

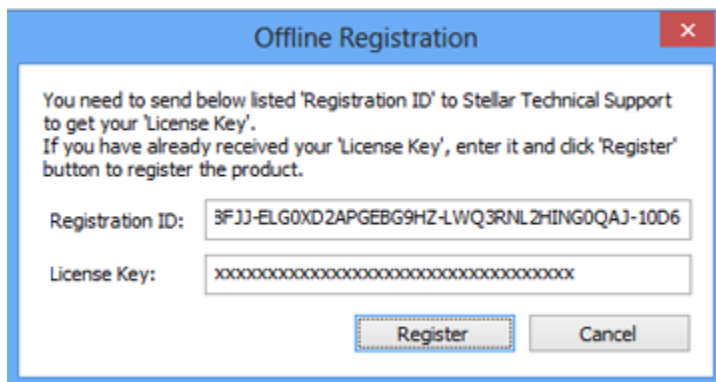
1. From the *Register* window, select **Offline Registration**. Click **OK**.



2. An **Offline Registration** dialog box will appear displaying **Registration ID** in its respective field.



3. To get your License Key, which is required to register the software manually, you need to mail the listed **Registration ID** to support@stellarinfo.com.
4. A License Key will be sent to your email address after verifying the Registration ID and purchase details by *Stellar Technical Support*.
5. After receiving the License Key, open **Stellar OLM to PST Converter**. In *Register* window, select '**I have the registration key**'.
6. Select **Offline Registration** and click **OK**.
7. Enter the **License Key** received through email in the field of License Key.



8. Click **Register** to activate the software. A confirmation message is displayed if a valid key is entered. Click **OK**.

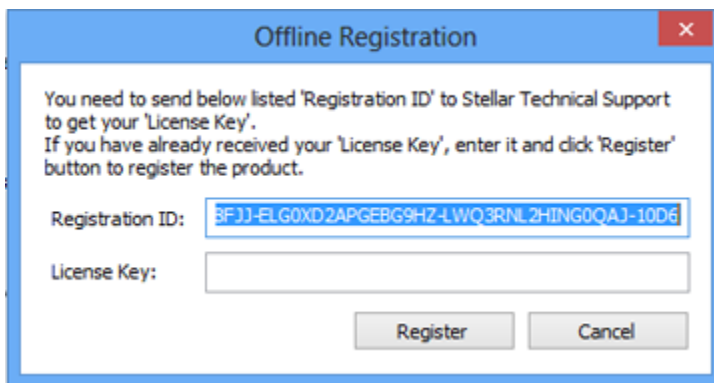
Transfer License

Stellar OLM to PST Converter allows you to transfer the license of the registered software to another computer on which you want to run the software with full functionality. This operation deactivates the product on your current computer so it can be reactivated on the new computer.

To transfer a software license from one computer to another, please follow the specific steps below:

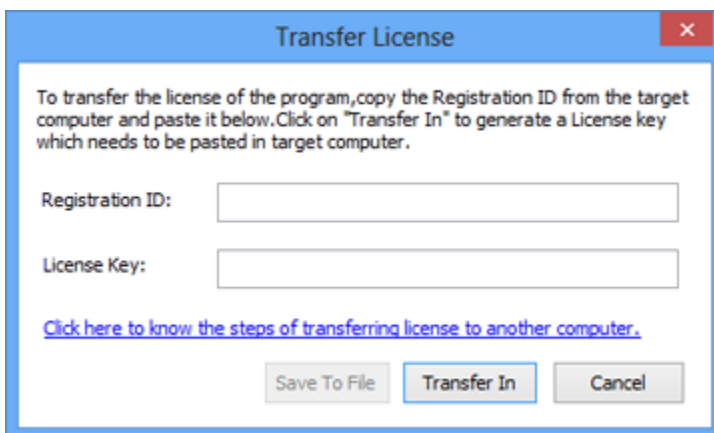
On Target Computer:

1. Run demo version of the software.
2. In **Registration** Menu on Menu Bar, click **Register**. A new dialog appears.
3. From the *Register* window, select **Offline Registration**. Click **OK**.
4. An **Offline Registration** dialog box will appear displaying **Registration ID** in its respective field.



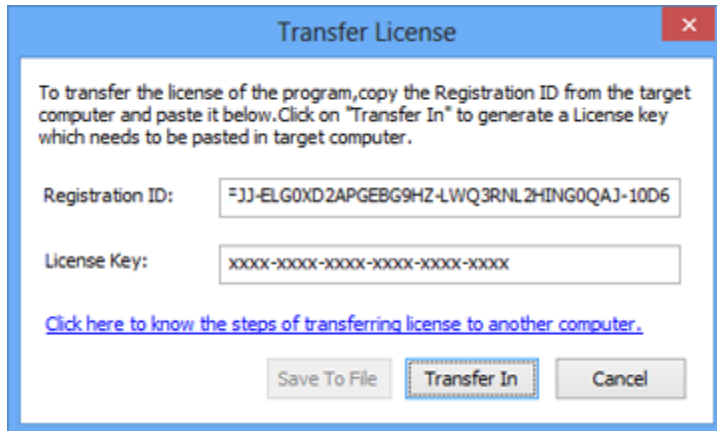
On Source Computer:

1. Run registered version of **Stellar OLM to PST Converter** software.
2. In **Registration** Menu on Menu Bar, click **Transfer License**.



3. Copy the **Registration ID** displayed on the Target Computer in the field of Registration ID on the Source Computer.

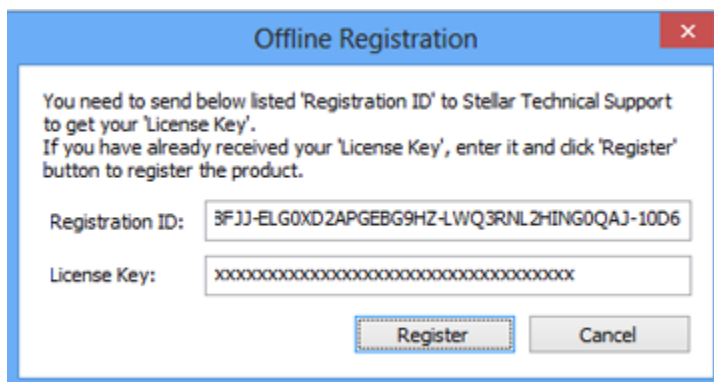
4. To get your License Key, click **Transfer In** button on Source Computer. This will generate a License Key.
5. You can also save the License Key generated on the source computer. Click **Save to File** button to save the Registration ID and the License Key. In **Browse for Folder** dialog box, select the location where you want to save the details. Click **OK**.
6. '*License Key has been saved successfully*' message is displayed after the saving process is completed successfully. Click **OK**.



This will deactivate the product on Source Computer and you will no longer be able to use the software anymore on this computer.

On Target Computer:

1. Type the **License Key** which you have generated on the Source Computer in the provided field of License Key.



2. Click **Register** to complete the activation process.
3. '*Activation Completed Successfully*' message is displayed after the process is completed successfully. Click **OK**.

Updating the Software

Stellar releases periodical software updates for **Stellar OLM to PST Converter** software. You can update the software to keep it up-to-date. These updates can add a new functionality, feature, service, or any other information that can improve the software. Update option of the application is capable of checking for latest updates. This will check for both latest minor and major versions available online. You can easily download minor version through the update wizard. However, the major version, if available, has to be purchased. While updating the software, it's recommended to close all the running programs. Note that demo version of the software cannot be updated.

To update Stellar OLM to PST Converter:

1. Click **Update Wizard** icon on the toolbar.
2. **Stellar Update Wizard** window opens. Click **Next**. The wizard will search for latest updates, and if it finds any new updates, a window will pop up indicating its availability.
3. Click **Next** and the software will download the files from the update server. When the process is complete, the software will upgrade to the latest version.

Live Update may not happen due to following reasons:

- Internet connection failure
- Updates are not available
- Unable to download configuration files
- Unable to locate updated files or version
- Unable to locate executable file

Note: If a major version is available, you need to purchase the software in order to upgrade it.

Stellar Support

Our **Technical** Support professionals will give solutions for all your queries related to **Stellar** products.

You can either call us or go online to our support section at <https://www.stellarinfo.com/support/>

For price details and to place the order, click <https://www.stellarinfo.com/email-tools/olm-to-pst-converter/buy-now.php>

Chat Live with an **Online** technician at <https://www.stellarinfo.com/>

Search in our extensive **Knowledge Base** at <https://www.stellarinfo.com/support/kb>

Submit enquiry at <https://www.stellarinfo.com/support/enquiry.php>

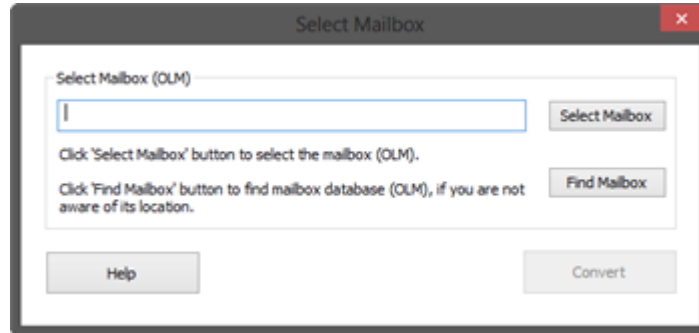
Send e-mail to **Stellar Support** at support@stellarinfo.com

Support Helpline Monday to Friday [24 Hrs. a day]	
USA (Tollfree- Pre Sales Queries)	+1-877-778-6087
USA (Post Sales Queries)	+1-732-584-2700
UK (Europe)	+44-203-026-5337
Australia & Asia Pacific	+61-280-149-899
Netherlands Pre & Post Sales Support	+31-208-111-188
Worldwide	+91-124-432-6777
Email Orders	orders@stellarinfo.com

Select OLM Mailbox

To select an OLM Mailbox:

- Open **Select Mailbox** dialog box by clicking **Select OLM Mailbox** icon on the toolbar, or by clicking **Select OLM Mailbox** from **File Menu**. Click **Select Mailbox**.



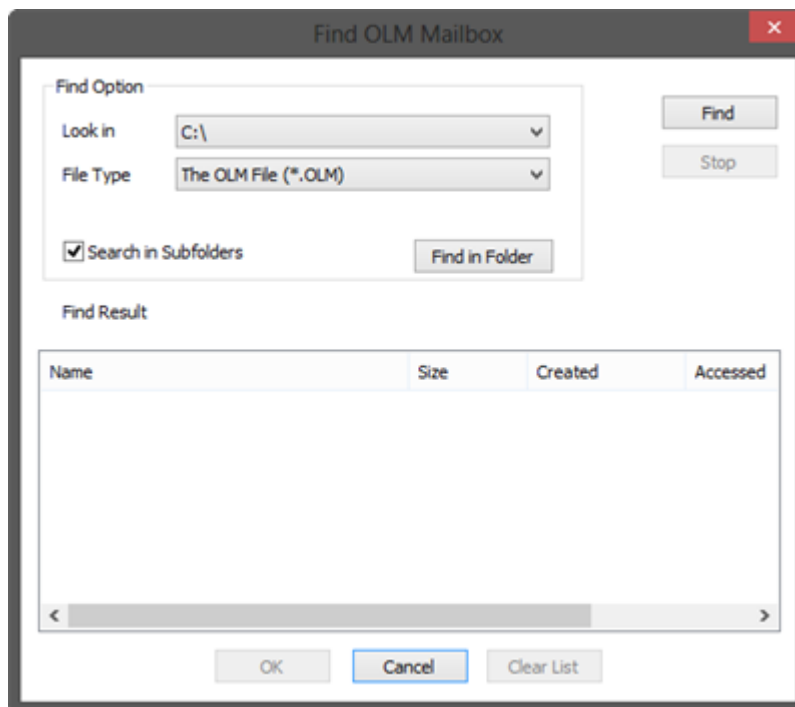
- In **Open** dialog box, locate and select the OLM file you need to convert. Click **Open**
- Click **Convert** to start the conversion process.

Find OLM Mailbox

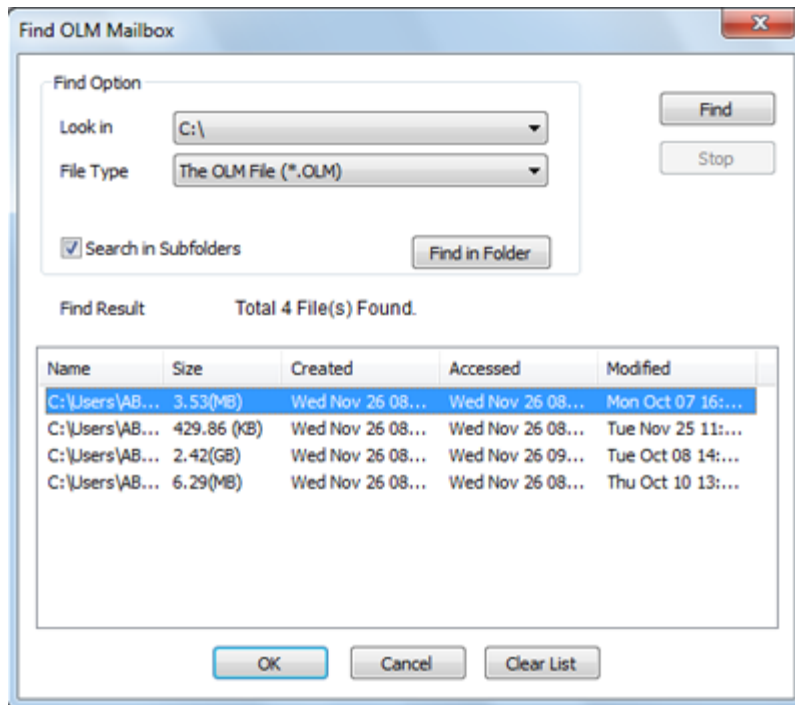
You can search for an OLM mailbox using **Find Mailbox** Option in **Select Mailbox** dialog box. You can search for files in drives, folders and sub folders. However, you can select only one drive at a time to search for files.

To search for an OLM Mailbox:

- Click **Find Mailbox** option in **Select Mailbox** dialog box. **Find OLM Mailbox** dialog box opens.



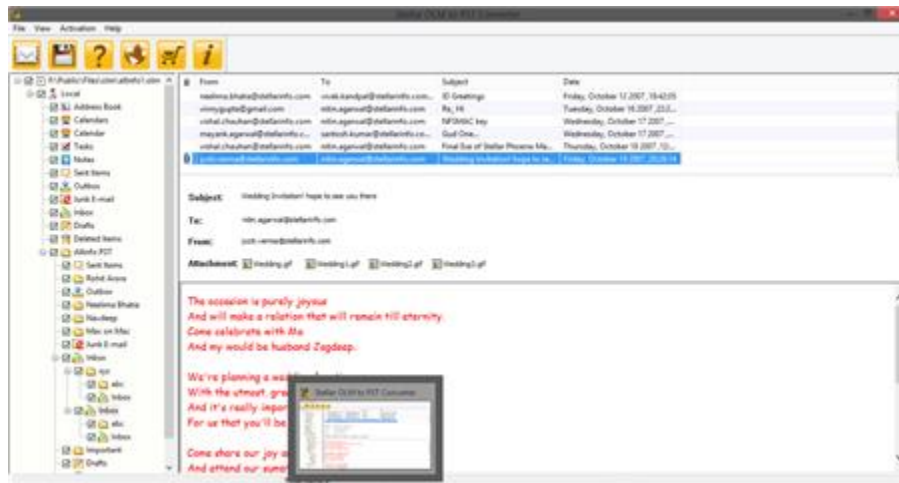
- Select required drive in **Look in** list box and click **Find** to search for OLM files.
- After the search is finished, list of OLM files found in the selected drive is shown in **Find OLM Mailbox** dialog box as shown below:



- Select file you wish to convert from this list and click **OK**.
- In **Select Mailbox** dialog box, click **Convert** to start the conversion process.

Preview of Mails

You can preview the converted mails, calendars, tasks and notes after the OLM file has been successfully converted. Left pane displays selected OLM filename under Root node in a tree like structure. Upper right pane displays the list of converted mails. To see content of desired mail, click on it in upper right pane. The content is displayed in lower right pane as shown below:

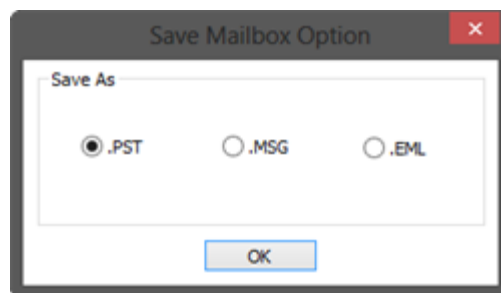


Save Converted Mailbox

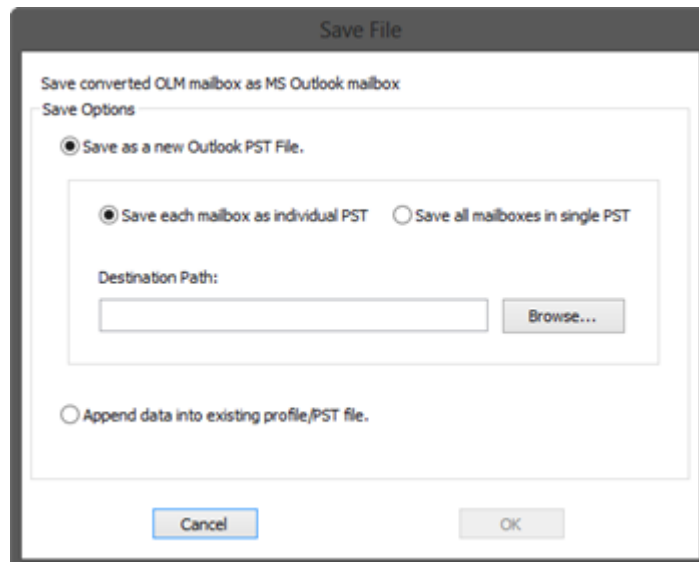
Stellar OLM to PST Converter software allows you to save the converted OLM Mailbox in PST, MSG or EML format.

To save the converted Mailbox as a PST file:

- Click **Save Converted Mailbox** icon on toolbar, or select **Save Converted Mailbox** option from **File Menu**.
- In **Save Mailbox Option** dialog box, select **PST** and click **OK**.



- **Save File** dialog box appears as shown below:

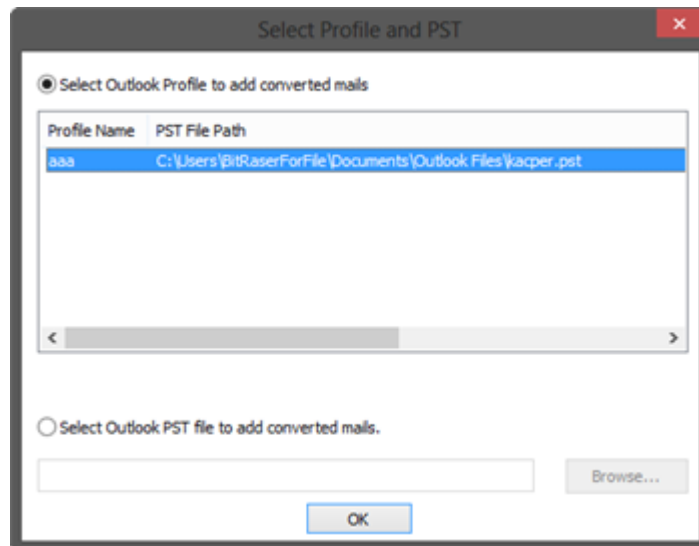


- To save Converted Mailbox in a new PST File:
 - Select **Save as a new Outlook PST File**.
 - If you want to save each converted mailbox as an individual PST file, select **Save each mailbox as individual PST**.

Or,

If you want to save all the converted mailboxes in a single PST file, select **Save all mailboxes in single PST**.

- Click **Browse** and select the location where you want to save the PST file. Click **OK**.
- To save converted mails in an existing Outlook profile / PST file:
 - Select **Append data into an existing profile / PST file**. **Select Profile and PST** dialog box opens as shown below:



- To add the converted mails to an existing Outlook profile, choose **Select Outlook Profile to add converted mails** and select one of the profiles that appear in the list.

Or,

To add the converted mails to an existing Outlook PST file, choose **Select Outlook PST file to add converted mails** and then click **Browse** to select the PST File.

- Click **OK** to save the converted mailbox into the selected Outlook Profile / Outlook PST file.

To save the converted Mailbox as a MSG file:

- Click **Save Converted Mailbox** icon on toolbar, or select **Save Converted Mailbox** option from **File Menu**.
- In **Save Mailbox Option** dialog box, select **MSG** and click **OK**.

- In **Stellar OLM to PST Converter** dialog box, click **Browse** and select the location where you want to save the converted file. Click **OK**.

To save the converted Mailbox as an EML file:

- Click **Save Converted Mailbox** icon on toolbar, or select **Save Converted Mailbox** option from **File Menu**.
- In **Save Mailbox Option** dialog box, select **EML** and click **OK**.
- In **Stellar OLM to PST Converter** dialog box, click **Browse** and select the location where you want to save the converted file. Click **OK**.

Import PST file in MS Outlook

To import PST file in Microsoft Outlook 2016 / 2013:

- Open Microsoft Outlook. From **File Menu**, select **Open & Export**.
- Select **Import / Export** option from the right pane.
- From **Import and Export Wizard window**, select **Import from another program or file**, click **Next**.
- In **Import a File** dialog box, select **Outlook Data File (.pst)**, click **Next**.
- Click **Browse** to locate the PST file that needs to be imported. In the options box, select an appropriate option. Click **Next**.
- In **Import Outlook Data File dialog box**, select the folders that should be imported in Microsoft Outlook. Click **Finish**.

To import PST file in Microsoft Outlook 2010:

- Open **Microsoft Outlook**. From **File Menu**, select **Open -> Import**.
- From **Import and Export Wizard window**, select **Import from another program or file**, click **Next**.
- In **Import a File dialog box**, select **Outlook Data File (.pst)**, click **Next**.
- Click **Browse** to locate the PST file that needs to be imported. In the options box, select an appropriate option. Click **Next**.
- In **Import Outlook Data File** dialog box, select the folders that should be imported in Microsoft Outlook. Click **Finish**.

To import PST file in Microsoft Outlook 2007:

- Open Microsoft Outlook. From **File menu**, select **Import and Export**.
- From **Import and Export Wizard window**, select **Import from another program or file**, click **Next**.
- In **Import a File dialog box**, select **Personal Folder File (PST)**, click **Next**.

- Click **Browse** to locate the PST file that needs to be imported. In the options box, select an appropriate option. Click **Next**.
- In **Import Personal Folders dialog box**, select the folders that should be imported in Microsoft Outlook. Click **Finish**.

View and Save Log Report

With **Stellar OLM to PST Converter**, you can save the Log Report to analyze the repairing process at a later stage. To view the log report, select **Log Report** from **View Menu**.

To save log report:

- From **View Menu**, select **Log Report**.
- In **Log Report** dialog box, select **Save Log**.
- In **Save As** dialog box, select the location where you want to save the log report. Click **Save**.

To clear log report:

- From **View Menu**, select **Log Report**.
- In **Log Report** dialog box, select **Clear Log**.

FAQs

1. What does the demo version of the software do?

In demo version of the software, you will be able to see the mail subject and body, but cannot open attachments. To view / save all data and open attachments, you need to purchase and register the software.

2. Can I convert a single mail into PST file?

You can only convert an entire folder in mailbox.

3. Can Stellar OLM to PST Converter search for an OLM file whose location is unknown to me?

Yes, you can search for OLM files using Find option present in Select OLM Mailbox dialog box.

4. Can I want to save converted mails into an existing PST file?

Yes, **Stellar OLM to PST Converter** gives you option to save converted mails into an existing or new PST file.

5. Can I convert multiple OLM files simultaneously?

You can only select one OLM file at a time for conversion.

6. Can I convert multiple Mailboxes simultaneously?

Yes, but the Mailboxes should be in a single OLM file.

7. Can we save process log?

Yes, **Stellar OLM to PST Converter** software allows you to save log report of the process.

To save Log Report:

- From **View Menu**, select **Log Report**.
- In **Log Report** dialog box, select **Save Log**.
- In **Save As** dialog box, select the location where you want to save the log report. Click **Save**.

Legal Notices

Copyright

Stellar OLM to PST Converter software, accompanied user manual and documentation are copyright of Stellar Information Technology Private Limited, with all rights reserved. Under the copyright laws, this user manual cannot be reproduced in any form without the prior written permission of Stellar Information Technology Private Limited. No Patent Liability is assumed, however, with respect to the use of the information contained herein.

Copyright© Stellar Information Technology Private Limited. All rights reserved.

Disclaimer

The Information contained in this manual, including but not limited to any product specifications, is subject to change without notice.

STELLAR INFORMATION TECHNOLOGY PRIVATE LIMITED PROVIDES NO WARRANTY WITH REGARD TO THIS MANUAL OR ANY OTHER INFORMATION CONTAINED HEREIN AND HEREBY EXPRESSLY DISCLAIMS ANY IMPLIED WARRANTIES OF MERCHANTABILITY OR FITNESS FOR ANY PARTICULAR PURPOSE WITH REGARD TO ANY OF THE FOREGOING STELLAR INFORMATION TECHNOLOGY PRIVATE LIMITED ASSUMES NO LIABILITY FOR ANY DAMAGES INCURRED DIRECTLY OR INDIRECTLY FROM ANY TECHNICAL OR TYPOGRAPHICAL ERRORS OR OMISSIONS CONTAINED HEREIN OR FOR DISCREPANCIES BETWEEN THE PRODUCT AND THE MANUAL. IN NO EVENT SHALL STELLAR INFORMATION TECHNOLOGY PRIVATE LIMITED, BE LIABLE FOR ANY INCIDENTAL, CONSEQUENTIAL SPECIAL, OR EXEMPLARY DAMAGES, WHETHER BASED ON TORT, CONTRACT OR OTHERWISE, ARISING OUT OF OR IN CONNECTION WITH THIS MANUAL OR ANY OTHER INFORMATION CONTAINED HEREIN OR THE USE THEREOF.

Trademarks

Stellar OLM to PST Converter® is a registered trademark of Stellar Information Technology Private Limited

Windows Vista®, Windows 7®, Windows 8®, Windows 8.1®, Windows 10® are registered trademarks of Microsoft® Corporation Inc.

All Trademarks Acknowledged.

All other brands and product names are trademarks or registered trademarks of their respective companies.

License Agreement

Stellar OLM to PST Converter

Copyright © Stellar Information Technology Private Limited. INDIA

www.stellarinfo.com

All rights reserved.

All product names mentioned herein are the trademarks of their respective owners.

This license applies to the standard-licensed version of **Stellar OLM to PST Converter**.

Your Agreement to this License

You should carefully read the following terms and conditions before using, installing or distributing this software, unless you have a different license agreement signed by Stellar Information Technology Private Limited.

If you do not agree to all of the terms and conditions of this License then do not copy, install, distribute or use any copy of **Stellar OLM to PST Converter** with which this License is included, you may return the complete package unused without requesting an activation key within 30 days after purchase for a full refund of your payment.

The terms and conditions of this License describe the permitted use and users of each Licensed Copy of **Stellar OLM to PST Converter**. For purposes of this License, if you have a valid single-user license, you have the right to use a single Licensed Copy of **Stellar OLM to PST Converter**. If you or your organization has a valid multi-user license, then you or your organization has the right to use up to a number of Licensed Copies of **Stellar OLM to PST Converter** equal to the number of copies indicated in the documents issued by Stellar when granting the license.

Scope of License

Each Licensed Copy of **Stellar OLM to PST Converter** may either be used by a single person or used non-simultaneously by multiple people who use the software personally installed on a single workstation. This is not a concurrent use license.

All rights of any kind in **Stellar OLM to PST Converter**, which are not expressly granted in this license, are entirely and exclusively reserved to and by Stellar Information Technology Private Limited. You shall not rent, lease, modify, translate, reverse engineer, decompile, disassemble or create derivative works based on **Stellar OLM to PST Converter** nor permit anyone else to do so. You shall not make access to **Stellar OLM to PST Converter** available to others in connection with a service bureau, application service provider or similar business nor permit anyone else to do so.

Warranty Disclaimers and Liability Limitations

Stellar OLM to PST Converter and all accompanying software, files, data and materials are distributed and provided AS IS and with no warranties of any kind, whether expressed or implied. You acknowledge that good data processing procedure dictates that any program including **Stellar OLM to PST Converter** must be thoroughly tested with non-critical data before there is any reliance on it and you hereby assume the entire risk of all use of the copies of **Stellar OLM to PST Converter** covered by this License. This disclaimer of warranty constitutes an essential part of this License. In addition, in no event does Stellar authorize you or anyone else to use **Stellar OLM to PST Converter** in applications or systems where its failure to perform can reasonably be expected to result in a significant physical injury or in loss of life. Any such use is entirely at your own risk and you would not hold Stellar responsible for any and all claims or losses relating to such unauthorized use.

In no event shall Stellar Information Technology Private Limited or its suppliers be liable for any special, incidental, indirect, or consequential damages whatsoever (including, without limitation, damages for loss of business profits, business interruption, loss of business information, or any other pecuniary loss) arising out of the use of or inability to use the software product or the provision of or failure to provide support services, even if Stellar Information Technology Private Limited has been advised of the possibility of such damages. In any case, Stellar Information Technology Private Limited's entire liability under any provision shall be limited to the amount actually paid by you for the software product.

General

This License is the complete statement of the agreement between the parties on the subject matter and merges and supersedes all other or prior understandings, purchase orders, agreements and arrangements. This License shall be governed by the laws of the State of Delhi, India. Exclusive jurisdiction and venue for all matters relating to this License shall be in courts and fora located in the State of Delhi, India and you consent to such jurisdiction and venue. There are no third party beneficiaries of any promises, obligations or representations made by Stellar herein. Any waiver by Stellar of any violation of this License by you shall not constitute nor contribute to a waiver by Stellar of any other or future violation of the same provision or any other provision of this License.

Copyright © Stellar Information Technology Private Limited. All rights reserved.

About Stellar

Stellar Data Recovery is a global leader in providing data recovery, data migration and data erasure solutions for the past two decades. **Stellar Data Recovery** is a customer centric, critically acclaimed, global data recovery, data migration & erasure solutions provider with cost effective solutions available for large corporates, SMEs & Home Users. **Stellar Data Recovery** is headquartered in New Delhi, India and has a strong presence across USA, Europe & Asia.

Product line:

Data Recovery

A widest range of data recovery software that helps you recover your valued data lost after accidental format, virus problems, software malfunction, file/directory deletion, or even sabotage!. [More Info >>](#)

File Recovery

The most comprehensive range of file undelete and unerase software for Windows and MS office repair tools. [More Info >>](#)

Email Recovery

A wide range of mail recovery, mail repair and mail conversion applications for MS Outlook, MS Outlook Express and MS Exchange useful in instances of data loss due to damages and corruption of Email. [More Info >>](#)

Data Protection

A wide range of Prevent Data Loss, Data backup and Hard Drive Monitoring Applications to ensure complete data protection against hard drive crash. [More Info >>](#)

Data Sanitization

Data cleanup and file eraser utility can delete selected folders, groups of files, entire logical drives, System Traces & Internet traces. Once the data have been removed using Stellar Wipe - Data File eraser utility, it is beyond recovery limits of any Data Recovery Software or utility. [More Info >>](#)

Data Erasure

Stellar Data Erasure software under the brand **BitRaser** help businesses & consumers permanently erase confidential data beyond the scope of data recovery. You can perform high speed bulk data

erasure & generate erasure certificates for audit trail purpose. **BitRaser** supports 24 International data erasure standards. [More Info >>](#)

For more information about us, please visit www.stellarinfo.com